

North Shore Community Centres Directory





Scan to download
a PDF version

Contents

04	Welcome/Mihi
05	What our Community Centres offer
06	North Shore Map
08	Albany Community Hub
10	Bayview Community Centre
12	Beach Haven Community House
14	Birkdale Community House
16	Devonport Community House
18	Glenfield Community Centre
20	Headquarters Building – Te Mahere
22	Heart of the Bays
24	Hearts and Minds Hub
26	Highbury Community House
28	Marlborough Park Youth Hall
30	Meadowood Community Centre
32	Rose Centre
34	Sunderland Lounge – Te Rere
36	Sunnynook Community Centre
38	Contact Directory

Print concept and design: Nigel Green
March 2024



Ko te Hapori tō mātou Pokapū
Community is at our Centre

Welcome/ Mihi

Hoki mai...

Hokia mai te mauri

Hoki mai te akiaki

Kia tupurearea

Kia tupu hapori momoho e!

Return

The life force

Let it be dynamic

Let it blossom

Let it flourish

To grow thriving communities!

He karakia whakahoki mai i te mauri ki ngā hapori

An invocation for the return of the life force to communities.



What our Community Centres offer

This directory provides information on community centres and their services, based on Auckland's North Shore. Each Community Centre provides its own unique services to its local community.

Auckland is a city made up of neighbourhoods and communities. At the heart of some of these communities is a community centre, house, or hub; a place for members of the local community to come together, attend programmes and courses, grow and learn.

We provide warm and welcoming places that are safe, affordable, and feel like the heart of the communities we serve.

We deliver places, activities and programmes, tailored to meet local interest and make a positive social impact.

We enable a pathway to local leadership; starting with attendance, participation, and leading through to successful and sustainable community-led facilities.

Provide—deliver—enable.

We look forward to seeing you.



ALBANY
COMMUNITY
HUB

p08

MEADOWOOD
COMMUNITY
CENTRE

p30



BAYVIEW
COMMUNITY
CENTRE

p10



GLENFIELD
COMMUNITY
CENTRE

p18



HEADQUARTERS
BUILDING

p20

SUNDERLAND
LOUNGE

p34



BEACH HAVEN
COMMUNITY
HOUSE

p12



BIRKDALE
COMMUNITY
HOUSE

p14

HIGHBURY
COMMUNITY
HOUSE

p26





HEART
OF THE BAYS

p22



SUNNYSOOK
COMMUNITY
CENTRE

p36



MARLBOROUGH
PARK
YOUTH HALL

p28



HEARTS AND
MINDS
HUB

p24



THE
ROSE
CENTRE

p32

DEVONPORT
COMMUNITY
HOUSE

p16



Albany Community Hub

Office Hours: 8:30am—5:00pm, Monday—Friday
Bookings Available Anytime Everyday

The Hub has four rooms that are for hire to the general public, local community organisations and local business. These are the Gravenstein Room (8 person capacity), the Albany Beauty Room (40 person capacity), the Albany House (50 person capacity), and the Fruit Growers Room (80 person capacity).

Each room at the Hub has access to accessible toilets, tables and chairs, car parking, free Wi-Fi, heat pumps and either a shared kitchen or private kitchen.

The hub also hosts a beautiful community garden, taken care of by residents of the local Settlers Lifestyle Village, a community pantry where you can drop excess food or take what you need, a community library, and a community table tennis table.

Community groups may be eligible for a discount, up to 40%, provided their activity meets the Local Board criteria. For more information, please refer to our website.





Albany Community Hub

Te Pokapū ā-Hapori o Ōkahukura



575 Albany Highway, Albany Domain, Albany



09 4154615



info@albanycommunityhub.co.nz



albanycommunityhub.co.nz



facebook.com/albanycommunityhub



575 Albany Highway, Albany Domain, 0632



Bayview Community Centre

Office Hours: 9:00am—2:00pm, Monday—Friday

Bayview Community Centre is nestled in the heart of one of the North Shore's lesser-known suburbs, off the beaten track but well worth a visit.

We have three spaces for hire, a large hall holding up to 150 people with a stage and full kitchen, a meeting room accommodating up to 30 people and a smaller counselling/ office room that can hold up to 7 people. All spaces are modern and fresh, with off-street parking, and is a great venue to consider for your next event.

The Centre holds community events as well as regular classes and lessons, so check out our website for the latest news, or ask to be added to our newsletter circulation list.





72 Bayview Road, Bayview



09 443 0231



office@bayviewcentre.org.nz



bayviewcentre.org.nz



facebook.com/bayviewcommunitycentre/



PO Box 40391, Glenfield, Auckland, 0747



Beach Haven Community House

Office Hours: 9:00am—3:00pm, Monday—Friday

Our vision is that all people in Birkdale and Beach Haven feel connected, valued and included. The Houses belong to all locals. The Birkdale/Beach Haven Community Project was incorporated in 1975. At that time, the concept of providing a “community house” in which people can gather and connect as an urban community was very new. Today, we can be proud of the vision and the intent of our founders.

We offer a range of programmes, events, and activities for all ages and cultures in our facilities and out in our community. Beach Haven Community House is also available for hire with different-sized rooms and options to cater to any event.

We recognise that our founding principles and purpose as defined in our Constitution in 1975 still have powerful relevance to our work nearly 50 years later. This tells us that those who founded the Project knew about building community, serving community, and supporting community ownership.





Birkdale Beach Haven
**Community
Project Inc**
We Belong Here | Nō konei ake tātou



130 Beach Haven Road, Beach Haven



09 483 9942



admin@birkdalebeachhaven.org.nz



birkdalebeachhaven.org.nz



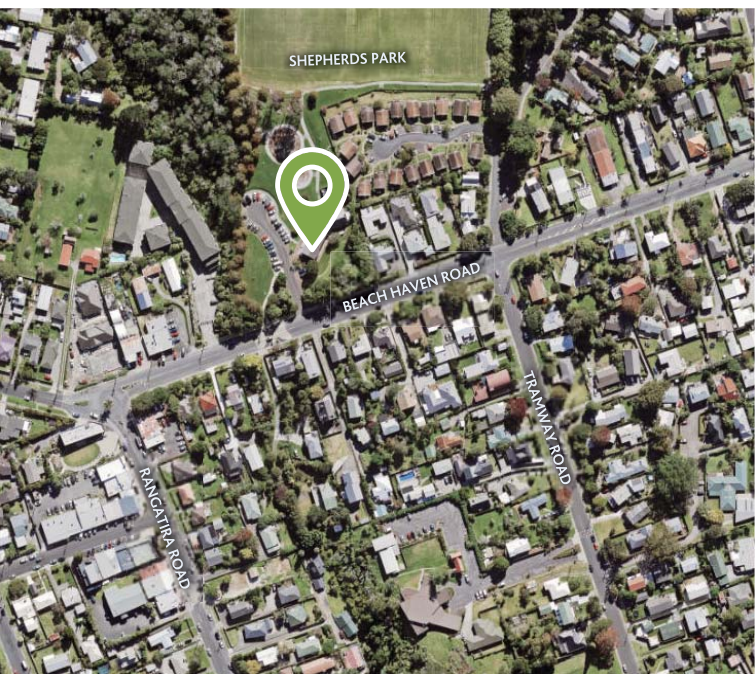
facebook.com/birkdalebeachhaven



130 Beach Haven Road, Beach Haven, 0626



Book a room now



Birkdale Community House

Office Hours: 9:00am—3:00pm, Monday—Friday
Bookings Available Anytime Everyday

'Our vision is that all people in Birkdale and Beach Haven feel connected, valued and included. The Birkdale/Beach Haven Community Project was incorporated in 1975. At that time, the concept of providing a “community house” in which people can gather and connect as an urban community was very new. Birkdale Community House was the very first Community House in New Zealand. Today, we can be proud of the vision and the intent of our founders.

We offer a range of programmes, events, and activities for all ages and cultures in our facilities and out in our community. Birkdale Community is also available for hire with different-sized rooms and options to cater to any event.

We recognise that our founding principles and purpose as defined in our Constitution in 1975 still have powerful relevance to our work nearly 50 years later. This tells us that those who founded the Project knew about building community, serving community, and supporting community ownership.





Birkdale Beach Haven
**Community
Project Inc**
We Belong Here | Nō konei ake tātou



134 Birkdale Road, Birkdale



09 483 9149



admin@birkdalebeachhaven.org.nz



birkdalebeachhaven.org.nz



facebook.com/birkdalebeachhaven



134 Birkdale Road, Birkdale, 0626



Book a room now



Devonport Community House

Office Hours: 9:00 am — 2:00 pm, Monday—Friday
Bookings can be made on devonportcomhouse.com.

Since 1979, the Devonport Community House has existed to enhance the social, cultural and physical well-being of our local community. We provide accessible, affordable facilities and have a wide and diverse range of programmes, workshops and opportunities on offer that can be found on our website.

The Devonport Community House is a safe and supportive environment where people can come to meet new friends, try new things, learn, share, contribute and participate. We have five spaces for hire with a special community and long term hire rate: the Kauri Hall for up to 200 people; the Rata Room for groups of 10 people; the Rimu Room for up to 30 people; the Kowhai Room for up to 6 people; the Pohutakawa Room for up to 20 people; and the Mezzanine lounge area for informal gatherings and meetings.

We also provide a variety of activities, classes and workshops in which the community can come together and participate, at very reasonable prices or free of charge. We operate a Seniors' Shoppers Run to and from Devonport New World, a Library van service and also run a School Holiday Programme for primary age children.





32 Clarence Street, Devonport



09 445 3068



info@devonportcomhouse.co.nz



devonportcomhouse.com



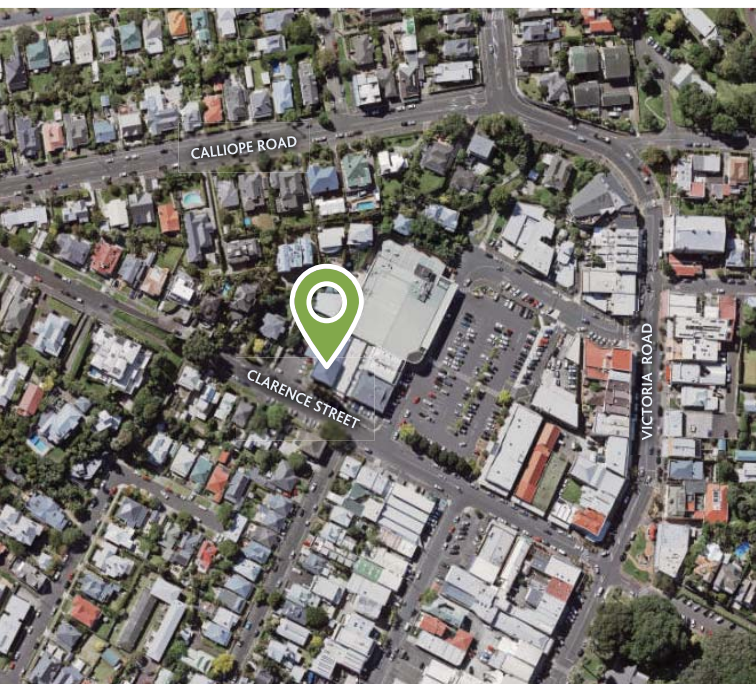
facebook.com/CommunityDevonport



instagram.com/devonportcommunityhouse/



32 Clarence Street, Devonport, 0624



Glenfield Community Centre

Office Hours: 8:00am—3:00pm, Monday—Friday
Bookings available 8:00am—10:00pm, 7 Days

We are a privately-owned and operated Community facility separate to Auckland Council and in partnership with the Methodist Church and the Kaipātiki Local Board.

Our core purpose is to support and enhance our community by making space available to bring individuals and groups together, to provide services and resources that meet community need and to build connections with organisations and people with similar values.

We provide rooms for the community and commercial organisations to hire in order to run arts courses, seminars, training workshops, practice crafts, education classes, worship, run exercise classes, access our commercial kitchen, undertake counselling, and run conferences.

We are a referral point for information, administer and maintain the facility, and work with other organisations to raise awareness about issues affecting our local community. Our tenants include Royal NZ Plunket, Beneficiaries Advocacy information Service, Literacy Aotearoa and Te Kōhanga Reo o Ngā Tikanga Pono.





GLENFIELD Community Centre

Ko te Hapori tō mātou Pokapū
Community is at our Centre



Corner Glenfield Road and Bentley Avenue



09 444 5023



office@gcc.net.nz



gcc.net.nz



facebook.com/glenfieldcommunitycentre



PO Box 40112, Glenfield, 0747



Book a room now



SCAN ME



Headquarters Building - Te Mahere

Hire from 7:00am—10:00pm, 7 days a week.

Office Hours are Monday—Friday 8:45am to 2:45pm.

The old RNZAF Headquarters Building on Buckley Avenue, Hobsonville Point has been lovingly refurbished and re-purposed as a community facility and venue for hire. The Headquarters is suitable for a range of social events and community activity bookings and consists of six carpeted rooms with a total capacity of 100 people.

The largest room has a capacity of 50 people with direct access to a covered deck, grass area and HQ park, while the remaining rooms have a capacity of between 6 to 45 people per room. There are tables and chairs available when booking a room, and the kitchen facilities include a zip, oven, induction hob, fridge and microwave.

The Headquarters has an accessible entrance and toilet facilities for wheelchairs and strollers as well as off-street parking.





 214 Buckley Avenue, Hobsonville Point

 022 541 1476

 venues@hobsonville.org.nz

 hobsonville.org.nz/book-facilities

 facebook.com/hobsonville.org.nz



Heart Of The Bays

Office Hours 10:00am — 2:00pm, Monday to Thursday
Bookings Available Anytime Everyday

Heart of the Bays Community Centre is situated on the village green in Browns Bay. The community centre offers a wide range of activities for children through to adults. There are seven rooms of varying sizes available for hire. The smallest room accommodates six people and the largest 40. Each room is equipped with a whiteboard, TV screen, DVD and Wi-Fi. St. Anne's Hall is also available for hire and is a great venue for children's birthday parties. The hall also offers a wide range of activities and is located on the corner of Beach and Glencoe Roads, Browns Bay.





2 Glen Road, Browns Bay



09 478 4091



debbie@hotb.co.nz



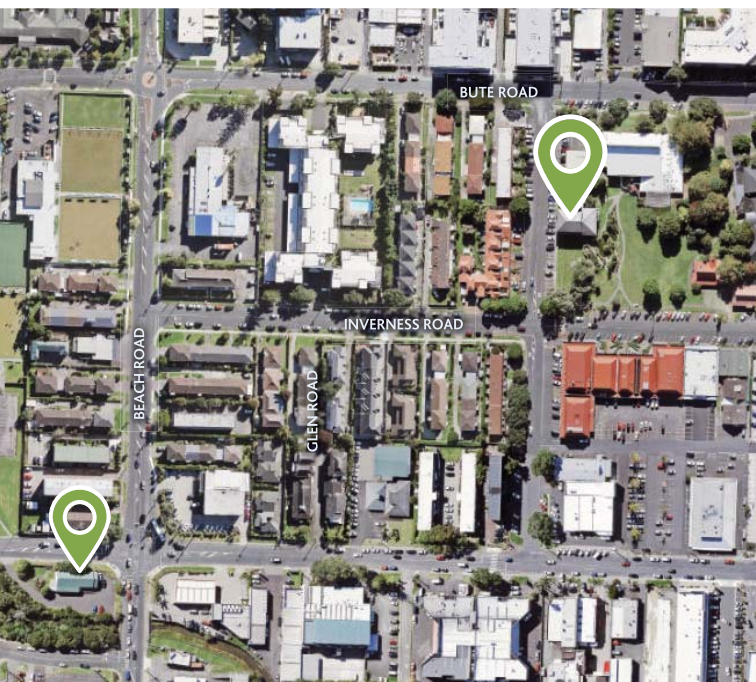
hotb.co.nz



facebook.com/Heartofthebays/



2 Glen Road, Browns Bay, 0630



Hearts & Minds Hub

Office Hours are currently Monday—Friday, 9:00am—4:00pm

Hearts & Minds is a proven, innovative early intervention model that generates strong health outcomes by providing community-based mental health support across North Shore, Waitakere and Rodney.

Our purpose is to inspire stronger, healthier communities by connecting people to resources and support that transform lives.

Our services include:

- Free Wellbeing Courses and groups
- Free Health & Support Navigation (They have a team of support coordinators who can connect you with the support best suited to your needs)
- Shared Vision
- Community Development
- Hearts & Minds Hub (the Hub has two awesome rooms available for hire for groups of 25 or fewer).





Hearts & Minds

Manawa Ora me te Hinengaro

Strengthening the Wellbeing of People and Communities



65 Pearn Crescent, Northcote



0800 468 288



info@heartsandminds.org.nz



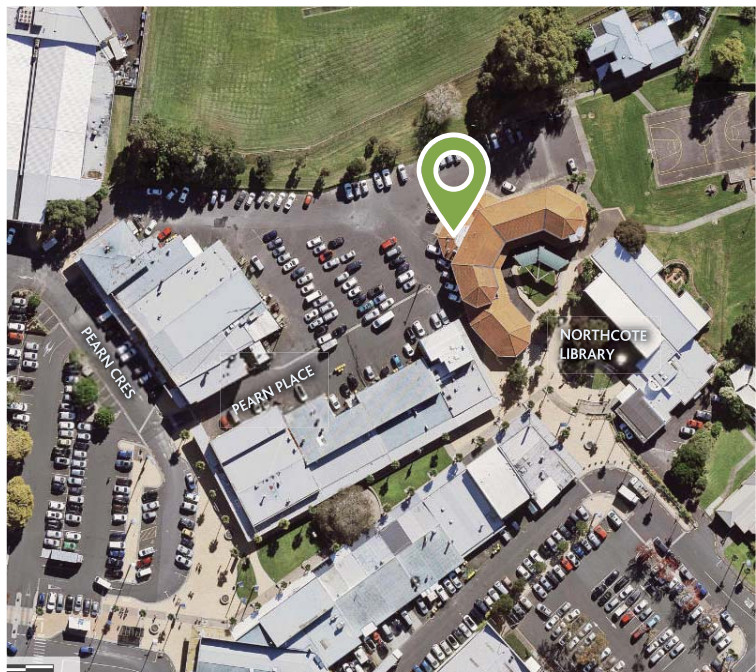
heartsandminds.org.nz/



facebook.com/heartsandmindsnz/



PO Box 36 336, Northcote, 0748



Highbury Community House

Office Hours 8:30am—3:00pm, Monday—Friday
Bookings Available: 8:00am—10:30pm All Week

Operating since 1979, Highbury House is a vibrant, supportive and welcoming Community House in Birkenhead on Auckland's North Shore.

Highbury House has three rooms available for hire. We are within easy access of the motorway, buses, and the Birkenhead ferry, surrounded by fantastic cafés and shops. There is plenty of onsite parking and disability access. All rooms have use of Wi-Fi and kitchen facilities.

We offer comfortable and affordable room hire for both community and business activities. We also hold regular events and workshops for the public.

Highbury Community House is a place to meet people and make friends, learn a new skill, and connect with the community.





Highbury House

Birkenhead's Community House



110 Hinemoa Street, Birkenhead



09 480 5279



admin@highburyhouse.org.nz



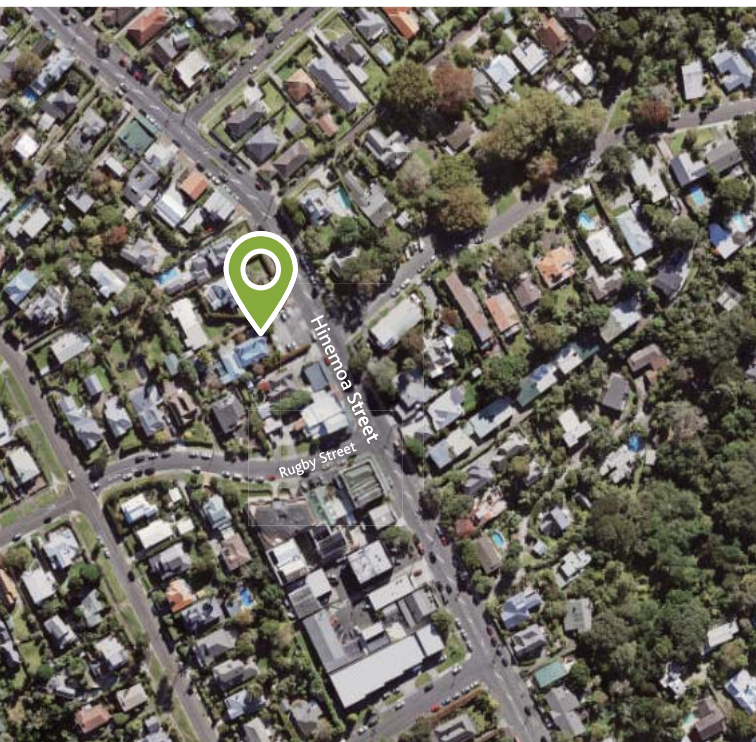
highburyhouse.org.nz



facebook.com/highburyhousenz/



110 Hinemoa Street, Birkenhead, 0626



Marlborough Park Youth Hall

Kaipātiki Youth Development Trust (KYDT) is a MSD-approved, community-based social service provider working alongside at-risk young people and their whānau.

The purpose of KYDT programmes is to decrease youth offending and to increase positive youth involvement in community-based activities and events, and to strengthen and establish partnerships with key community and statutory stakeholders by working collaboratively and developing intervention strategies that work for whānau and communities. KYDT staff are committed to offering a culturally competent practice and provide a safe environment for young people.

Due to the nature of the work, the building is not a hire facility as such, as it does not lend itself to general bookings such as birthday parties, etc. However, if the Youth Facility wishes to be used for a youth-related programme or event, and providing it was available, consideration could be given to ways of supporting the event.





13R Chartwell Avenue, Glenfield



021 0274 4698



kydt13@outlook.com



PO Box 34344, Birkenhead, 0626



Meadowood Community Centre

Office Hours: 9:00am—2:30pm, Monday—Thursday,
9:00am—12:00pm Friday
Bookings Available: 8:00am—11:30pm, Everyday

Since 1991, Meadowood Community Centre has been situated in the Meadowood Reserve in Unsworth Heights. Our motto is '*We're here for you: Kei konei matou maau*'. We welcome everyone into our centre to be part of our multi-cultural community and to join in where ever you can.

We have a variety of opportunities for you to participate in: educational classes, multi-cultural groups, physical, social and spiritual programmes. Alternatively, if you are passionate about starting a group yourself, please get in touch with us and we can help you get your group up and running. This is a place to connect with others, make friends and learn new skills. We are also a fantastic, affordable venue for one off bookings such as: birthday parties, business meetings and group celebrations.

The total capacity of the house is 80 people. We have 4 rooms for hire to the general public, local community organisations and local businesses.

See our website more information.





Meadowood
Community
Centre

We're here for you
kei konei matou maaui



55 Meadowood Drive, Unsworth Heights



09 443 7337



house@meadowood.co.nz



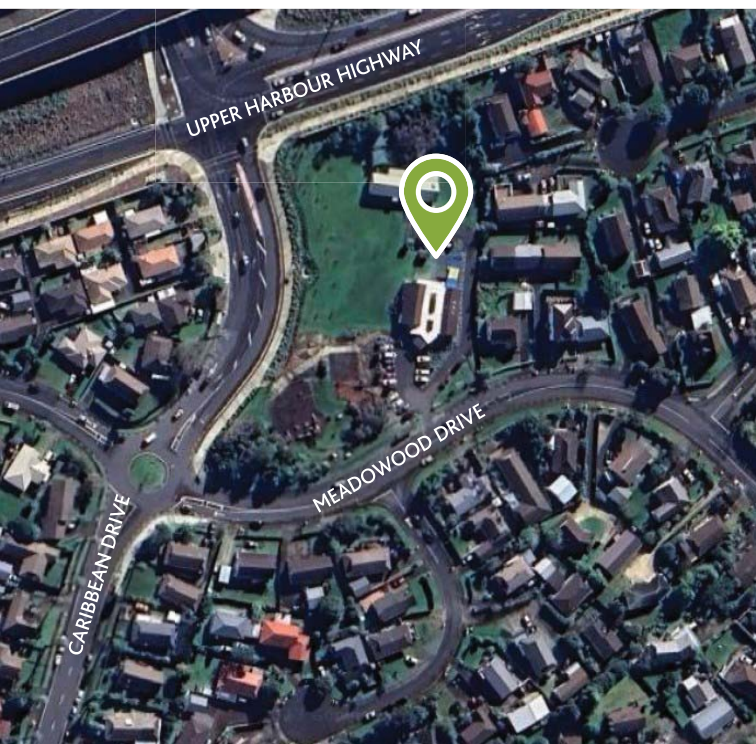
meadowood.co.nz



facebook.com/meadowoodhouseNZ/



55 Meadowood Drive, Unsworth Heights,
0632



Rose Centre

Office Hours 8:30am—4:00pm, Monday—Friday
Bookings Available Anytime Everyday

Kia ora!

Rose Centre is Devonport peninsula's own Community Centre and Theatre.

We are a multi-disciplinary performing arts hub located in the heart of the peninsula and we offer:

- Professional 126 raked seat Theatre with full light rig and sound system.
- A foyer and glass atrium hub with complete kitchen facilities.
- Separate meeting room.
- Large accessible outdoor deck.
- Car parking directly outside for 20 cars.

Our friendly team is here to discuss your ideas for community participation and opportunities in our venue!

Come to us with your proposals for events, classes, festivals, markets, private events and place-making.





ROSE CENTRE



4 School Road, Belmont



09 445 9900



kiaora@rosecentre.co.nz



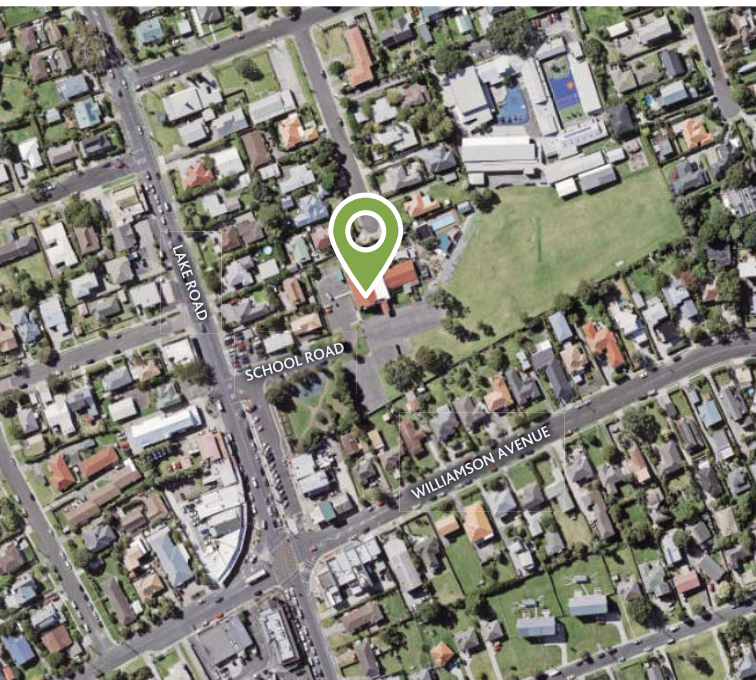
rosecentre.co.nz



facebook.com/rosecentre/



4 School Road, Belmont, 0622



Sunderland Lounge - Te Rere

Headquarters Building next door at 214 Buckley Avenue and our hours are currently 8:45am – 2:45pm.


The Sunderland Lounge was built in the late 1940s and was initially used as the airbase's cinema. It has now been beautifully refurbished and repurposed as a community facility and venue for hire. Sunderland Lounge is suitable for a range of social events, community activities and weddings. It has a total venue capacity of 374 people.

The large hall has a maximum capacity of 277 people and includes direct kitchen access. There are two community rooms, one with a kitchenette, and the other with direct kitchen access, as well as a foyer entrance, and a large kitchen. The kitchen facilities include a large preparation area, oven, large stove top, dish sanitiser, fridge and microwave.


Seating for 200 people. Audio visual equipment and staging is available for hire. Free off-street parking.






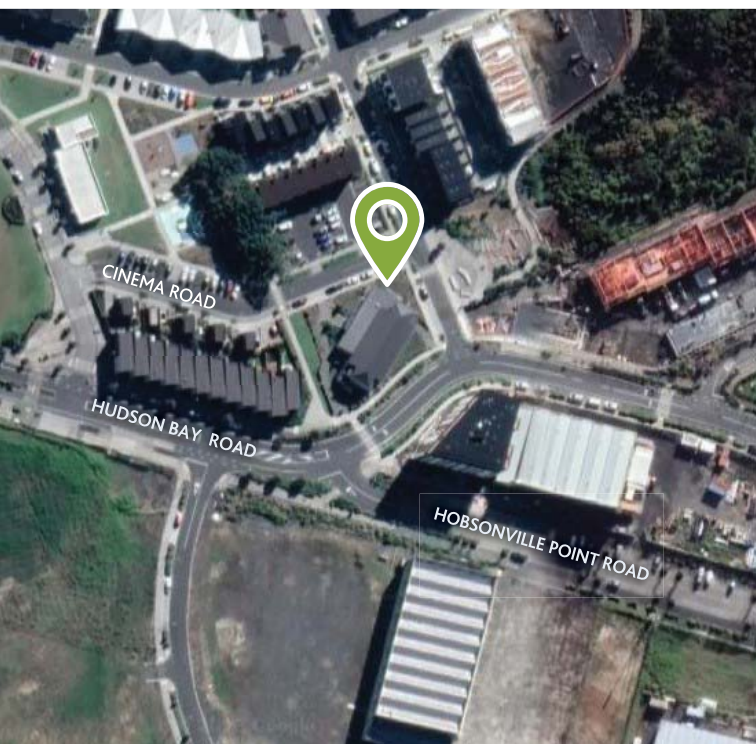
 Cinema Road, Hobsonville Point

 022 541 1476

 venues@hobsonville.org.nz

 hobsonville.org.nz/book-facilities

 facebook.com/hobsonville.org.nz



Sunnynook Community Centre

Office Hours: 9:00am—4:00pm, Monday—Friday
Bookings Available: 8:00am—10:00pm Everyday

Sunnynook Community Centre is situated on the corner of Sunnynook Road and Sycamore Drive in Sunnynook on the North Shore, Auckland. We have rooms for hire at Sunnynook Community Centre and the Kennedy Park Observation Post that is situated in Castor Bay. We have the Sunnynook Community Early Learning Centre that is open during school terms. We also run a School Holiday Programme at Sunnynook and a Youth Holiday Programme at Kennedy Park. Our purpose is to enhance social and cultural well-being by providing accessible and affordable opportunities for people of all ages, cultures and interests to come together in a safe and supportive environment to make friends, meet people, learn, contribute and participate in the local community and in programmes and services developed in response to changing community needs. We will endeavour at all times to have a strong community focus driving the decisions we make, to provide a warm and welcoming environment for all Centre users, to embrace and celebrate diversity within our community, to be family-focussed and safety conscious, and to provide a quality facility for users.





SUNNYNOOK COMMUNITY CENTRE



Corner Sunnynook Road & Sycamore Drive



09 410 4902



snook.com.cen@xtra.co.nz



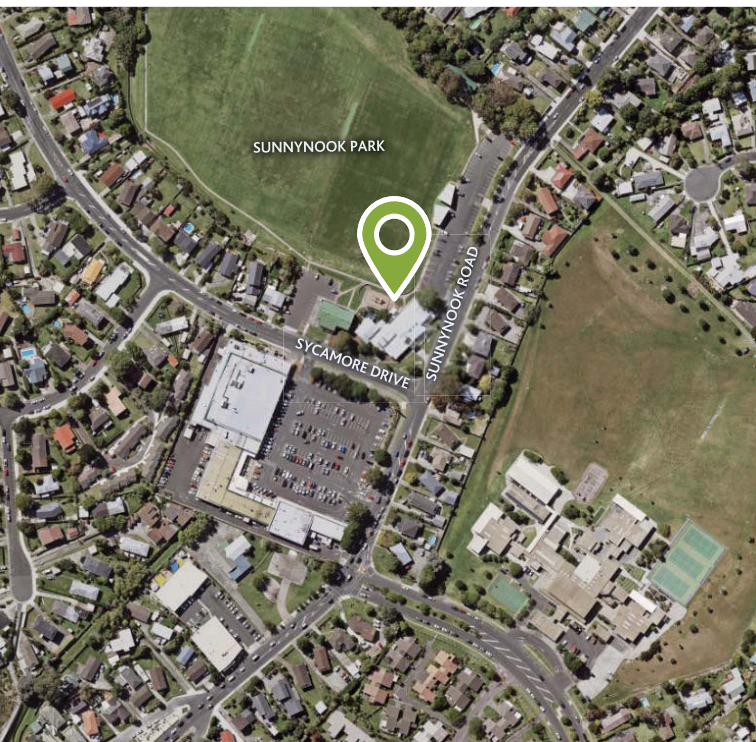
sunnynookcomcentre.co.nz



facebook.com/SunnynookCommunityCentre



148 Sycamore Drive, Sunnynook, 0620



Quick Directory

Albany Community Hub

575 Albany Highway, Albany Domain, Albany
09 379 2030
venuehire@aucklandcouncil.govt.nz

Bayview Community Centre

72 Bayview Road, Bayview
09 443 0231
office@bayviewcentre.org.nz

Beach Haven Community House

130 Beach Haven Road, Beach Haven
09 483 9942
admin@birkdalebeachhaven.org.nz

Birkdale Community House

134 Birkdale Road, Birkdale
09 483 9942
admin@birkdalebeachhaven.org.nz

Devonport Community Centre

32 Clarence Street, Devonport
09 445 3068
info@devonportcomhouse.co.nz

Glenfield Community Centre

Corner Glenfield Road and Bentley Avenue
09 444 5023 Ext. 1
office@gcc.net.nz

Heart of the Bays

2 Glen Road, Browns Bay
09 478 4091
debbie@hotb.co.nz

Hearts & Minds Hub

65 Pearn Crescent, Northcote

0800 468 288

info@heartsandminds.org.nz

Headquarters Building - Te Mahere

214 Buckley Avenue, Hobsonville Point

022 541 1476

hobsonville.org.nz/book-facilities/

Highbury Community House

110 Hinemoa Street, Birkenhead

09 480 5279

admin@highburyhouse.org.nz

Marlborough Park Youth Hall

13R Chartwell Avenue, Glenfield

021 027 44698

kydt13@outlook.com

Meadowood Community Centre

55 Meadowood Drive, Unsworth Heights

09 443 7337

house@meadowood.co.nz

Rose Centre

4 School Road, Belmont

09 445 9900

hello@rosecentre.co.nz

Sunderland Lounge - Te Rere

Cinema Road, Hobsonville Point

022 541 1476

hobsonville.org.nz/book-facilities/

Sunnynook Community Centre

Corner Sunnynook Road and Sycamore Drive

09 410 4902

snook.com.cen@xtra.co.nz



**SUNNYNOOK
COMMUNITY
CENTRE**



**Scan to download
a PDF version**