

GLENFIELD

Community Centre



Centrelines Newsletter

Welcome to the Glenfield Community Centre

We are a friendly, not-for-profit Incorporated Society community hub on Auckland's North Shore offering affordable room hire, community and business activities, educational, social and active classes, together with a well-respected and WINZ-approved Early Learning Centre.

The purpose of our Centre

Is to recognise and respond to the social, cultural, recreational and educational needs of the community and to find ways to meet these needs.

If you can't find what you are looking for

on the pages within, why not start a group? Do you, or anyone you know need a room for your regular meetings or activities? Do you have a skill you could offer the community but just need assistance in putting something together? We would currently like to add further social/physical activities to our list.

Rooms of all sizes

We have spaces ranging in size from small offices for two-three people to our Mission Hall which will accommodate up to 65-100 persons. See our room hire page on the website, or ask for our Rate Card for costs and configurations.

Community is at our Centre

And we would really like to see more of you and offer more to you.

Please talk to us.

Office@gcc.net.nz

www.gcc.net.nz

444 5023

Inside this issue

Office Hours	2
Early Learning Centre	2
Kitchen Hire.....	2
Mission Hall.....	2
Reduced Office rates.....	2
Regular Listings	3-5
Tenants on site.....	6

What's New This Edition

- Become a Friend of the Centre—see our website > about us > membership—<https://gcc.net.nz/about-us/membership/>
- **2021 BOOKINGS ARE OPEN**
Please see our Room Hire page on the website for the 2021 Hire Agreement and Rate Card or email us and ask for a copy. We are taking bookings for both regular and casual hires
- 2021 has started positively for us with several new and regular hirers on board. Our spaces are filling fast and in some time slots we are already fully booked for the whole year!
- You may notice our email and web page addresses have changed to a new and shorter version, however the old addresses still work just fine.



Office Hours

The Centre Office hours are 8.00am and 3.00pm Monday to Friday, however our current staffing situation may see the office unattended from 11.30am. We apologise for any inconvenience but please be assured your communications will be actioned within 24 hours.

Community Centre Hours

Rooms at the Centre may be hired 7 days a week between the hours of 8.00am and 10.00pm only.

Registered Kitchen

The Glenfield Community Centre is proud to offer an “A” Grade Kitchen for hire. The kitchen can be hired for production of food items for re-sale at markets etc. The cost is \$20.00 per hour including GST, and it is available Monday to Friday, 8.30am to 3.00pm only. Please contact the Centre Office for availability or to discuss further.

Glenfield Mission Hall

The Glenfield Mission Hall is a registered Heritage Building. Built by local people for the community in 1915, it was totally refurbished in 2015 and we celebrated its 100 year Centenary in the September. Ideal for larger groups and comfortably seats 75. The floors are carpeted. The Mission Hall is in high demand.



Social Event Room Hire

Social events such as Christenings/Weddings/Memorial Services may be accommodated at the Community Centre where space and availability permit. Hire is only available between the hours of **8.00am and 10.00pm**. The Centre has a **NO ALCOHOL** policy. Due to these restrictions, the Centre is not a suitable “party” hire venue. Please contact the Office for further information.

Community is at our Centre

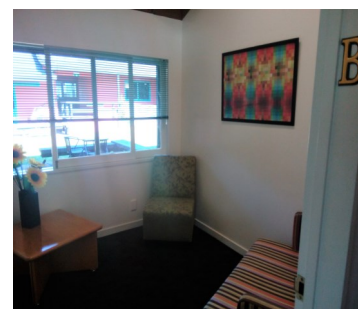
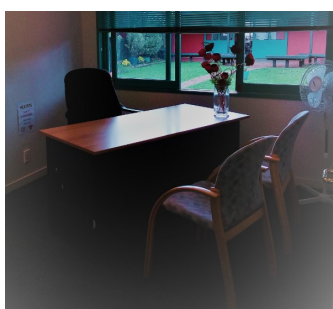


Glenfield Early Learning Centre

Our Early Learning Centre caters for children aged 1 to 5 years old between the hours of 9.00am and 2.30pm, Monday to Friday, **term time only**. We offer pre-booked sessions with qualified staff who provide a caring and positive environment for children. Our Centre is registered for 20 Free Hours and Work and Income NZ subsidies. Please note the GELC has its own dedicated telephone line. Call them on 444 0818 or visit our website for more information. **GELC reopens for 2021 on Tuesday 9th February**

Office space available - Reduced rates for 2021!

We have five small offices available for those one-on-one meetings or just a space to do your paperwork. Office B has been set up without a desk [picture far right]. For 2021 we have negotiated a drop in the hourly rate for these spaces. Call ahead as these rooms are in demand. Prepayment and a 24-hour notice cancellation policy applies.



Regular Listings

All bookings are subject to change—keep up-to-date via our website or contact the group directly

MONDAY

AA GLENFIELD 8.00pm-9.00pm, Room 1

If you want to drink that's your business, but if you want to stop, AA can help.
Drop in, or call **0800 229 6757**. (Also see Sunday listing for alternative group)

ADDA—Auckland Defensive Driving Academy - various dates throughout 2021

Courses have been running in Auckland since 2003. Unique in that ADDA are not a driving school that runs defensive driving courses on the side—they specialize in providing only quality Defensive Driving courses. These course are approved by Land Transport NZ, and ADDA is an approved provider.

For more information visit www.addanz.co.nz or phone **486 1909**.

GROW North Shore Room 1, 1.00pm-3.00pm

A community mental health movement organised and led by people recovering or recovered from mental illness and from other serious personal inadequacies or maladjustments to life. Call Sandy for further information **021 049 1360 or 846 6869**

LITERACY AOTEAROA

Get the help you need to take charge of your life by improving your reading, writing and maths skills. Free courses available—visit their website <https://literacy.org.nz/literacy-aotearoa-auckland-north>

Email info.c2@literacy.org.nz or phone 444 0420

MINI SMILES & LITTLE ANNIE—Pop-In Portraits

Will again be taking portrait photographs at the Centre on various dates throughout 2021.

These are extremely popular sessions! Check their website www.popin.co.nz for further details and bookings.

MIT—Manukau Institute of Technology—Beginner/Elementary English Classes

Skills for Everyday Life. Our friendly classes are for people wanting to improve their English language skills for everyday life, study or work. **All learners must register with MIT directly on 09 968-8748 or email silvia.lung@manukau.ac.nz**

SKILLS UPDATE

Training and education group—visit their website www.skillsupdate.co.nz

TUESDAY

ENGLISH LANGUAGE PARTNERS NZ—English for Everyday Life

English language classes of various levels held for adult migrants/refugees. All learners **must register with the ELP office directly on 489 2078 or email northshore@englishlanguage.org.nz** www.englishlanguage.org.nz

LITERACY AOTEAROA

Get the help you need to take charge of your life by improving your reading, writing and maths skills. Free courses available—visit their website <https://literacy.org.nz/literacy-aotearoa-auckland-north> Email info.c2@literacy.org.nz or phone 444 0420

WEDNESDAY

ART ACADEMY—REALISTICUS—Room 2, 3.30pm-4.30pm or 4.30pm-5.30pm

Realistic Art Classes for Kids (ages 5-13). Get excited about drawing! Learn from Reality and Create the World of your Dreams. Fantastic Skills for Life. For further information and bookings visit www.ArtAcademy.co.nz, check out facebook.com/RealisticusArtAcademy or email info@artacademy.co.nz

ADDA—Auckland Defensive Driving Academy Various dates throughout the year.

ADDA have been running the best value courses in Auckland since 2003. It is unique as they are not a Driving School that run Defensive Driving Courses on the side, they specialise in providing quality Defensive Driving Courses—Approved by LTNZ and ADDA is an approved provider. For information **phone 486 1909** or visit www.addanz.co.nz

ENGLISH LANGUAGE PARTNERS NZ Term time only—by registration

Conversation mornings, and English for Employees evenings
English language classes of various levels held for adult migrants/refugees.

www.englishlanguage.org.nz

All learners **must register with the ELP office directly on 489 2078**

or email northshore@englishlanguage.org.nz

LITERACY AOTEAROA

Get the help you need to take charge of your life by improving your reading, writing and maths skills. Free courses available—visit their website <https://literacy.org.nz/literacy-aotearoa-auckland-north>

Email info.c2@literacy.org.nz or **phone 444 0420**

WELL WOMEN & FAMILY TRUST—by appointment

Offering free cervical screening clinics for women. For dates of next clinics to be held here and for appointments please contact Inseong Choi via Korean@wons.org.nz or Michelle Hwang via Asianhealth@wons.org.nz or phone 846-7786

THURSDAY

ENGLISH LANGUAGE PARTNERS NZ Term time only—by registration

English for Everyday Life—mornings
English language classes of various levels held for adult migrants/refugees.

www.englishlanguage.org.nz

All learners **must register with the ELP office directly on 489 2078**

or email northshore@englishlanguage.org.nz

LITERACY AOTEAROA

Get the help you need to take charge of your life by improving your reading, writing and maths skills. Free courses available—visit <https://literacy.org.nz/literacy-aotearoa-auckland-north>

Email info.c2@literacy.org.nz or **phone 444 0420**

SHANTI NIWAS Mission Hall, 10.30am-1.30pm

Culturally appropriate programme for older persons of Indian or South Asian origin. For more information phone Nilima Venkat on **622 1010** or email shantiniwas@xtra.co.nz

FRIDAY

ART ACADEMY—REALISTICUS—Room 2, 3.30pm-4.30pm or 4.30pm-5.30pm

Realistic Art Classes for Kids (ages 5-13). Get excited about drawing! Learn from Reality and Create the World of your Dreams. Fantastic Skills for Life. For further information and bookings visit www.ArtAcademy.co.nz, check out facebook.com/RealisticusArtAcademy or email info@artacademy.co.nz

COMMUNITY KNITTING GROUP (check the daily board for room), 10.00am-12noon

Fun, friendly group of knitters and crocheters who meet each week to make blankets, clothes and toys for local families in need of a little extra. All levels welcome. Phone the Centre Office for more information 444 5023.

Donations of 8ply (double knit) acrylic wool are most welcome. Contributions may be left at the GCC Office 8am-3pm Monday to Friday.

ENGLISH LANGUAGE PARTNERS NZ Term time only—by registration

Conversation evenings. English language classes of various levels held for adult migrants/refugees. www.englishlanguage.org.nz All learners **must register with the ELP office directly on 489 2078** or email northshore@englishlanguage.org.nz

GLAUCOMA NZ—monthly meetings

Peer support groups are run up and down the country for people living with glaucoma. They are an opportunity to share your experience with like minded people and get support from people who understand. “A place to ask questions in a non-judgemental environment”.

phone 373-8779 or email info@glaucoma.org.nz Dates of upcoming meetings can be found on the website: www.glaucoma.org.nz/GNZ-News/Support-Groups.asp

LITERACY AOTEAROA

Get the help you need to take charge of your life by improving your reading, writing and maths skills. Free courses available—visit their website <https://literacy.org.nz/literacy-aotearoa-auckland-north>

Email info.c2@literacy.org.nz or **phone 444 0420**

MIT—Manukau Institute of Technology—Beginner/Elementary English Classes

Skills for Everyday Life. Our friendly classes are for people wanting to improve their English language skills for everyday life, study or work. **All learners must register with MIT directly on 09 968-8748** or email silvia.lung@manukau.ac.nz

SHANAN HALBERT—Northcote MP—COMMUNITY HUI

Feb 19, Mar 19, Apr 09, 30—10.00am

Drop by for a cuppa and meet your member of Parliament at 10am or if you or your whanau need advice or support email shanan.halbert@parliament.govt.nz for a booking.

SATURDAY

SUNDAY

AA NORTH HARBOUR Room 2, 10.30am-12.30pm

If you want to drink that's your business, if you want to stop we can help. Phone 0800 229 6757 for more information. (Also see Monday listing for alternative group).

LIFESKILLS CHURCH Mission Hall & Room 3, 3.00pm-6.00pm

Please contact Shirley Mills at shirleymills@outlook.co.nz for further information

THANKS MISSIONS CHURCH Room 3, 9.30am-11.30am

Please contact Daewie Kim at thankschurchnz@gmail.com for more information.

WALKING WITH CHURCH Room6 & Mission Hall, 9.00am-1.00pm

Please contact Jungwoo Kim at love_jesusheart@hotmail.com for more information.

Sponsorship & Funding

The following Organisations help the Centre by way of sponsorship and funding throughout the year. We thank them for their invaluable support.

The Methodist Church of New Zealand; Kaipatiki Local Board; Kaipatiki Community Facilities Trust; Auckland Council; Foundation North; The Lion Foundation; Rotary Glenfield; Ray White Glenfield; Trillian Trust; Lottery Grants Board; Four Winds Foundation; North Shore Heritage Trust; Trusts Community Foundation; Barfoot & Thompson Glenfield.



Our Community Knitters
need donations of

DOUBLE KNITTING
(or 8 PLY) WOOL

The following not-for-profit community groups have or utilise offices on site and can be accessed by appointment :

The Royal New Zealand Plunket Trust

Plunket provides a Well Child health service to all New Zealand families with children under 5 years of age. For information on groups and for appointments, phone 838-0981

Beneficiaries Advocacy & Information Service (BAIS)

BAIS provides advice, information and advocacy for Beneficiaries and people on low incomes regarding eligibility to Income Support—by appointment only. Phone Jacqui or Karen on 444 9543, or email info@bais.org.nz

Literacy Aotearoa

Our core activity is delivering learning services to adults nationwide, in the community and in workplaces, assisting them to improve their literacy, numeracy and communication skills. Phone 444 0420 www.literacy.org.nz

Well Women & Family Trust

Well Women and Family Trust (WWFT) was founded in 1988 in response to the Cartwright enquiry, to provide clinical services that would exceed recommendations and ensure women would have access to high quality, free, culturally appropriate, respectful and informed Cervical screening. For full information on services please visit www.wons.org.nz or phone 846 7886